

Mason® Technical Specification

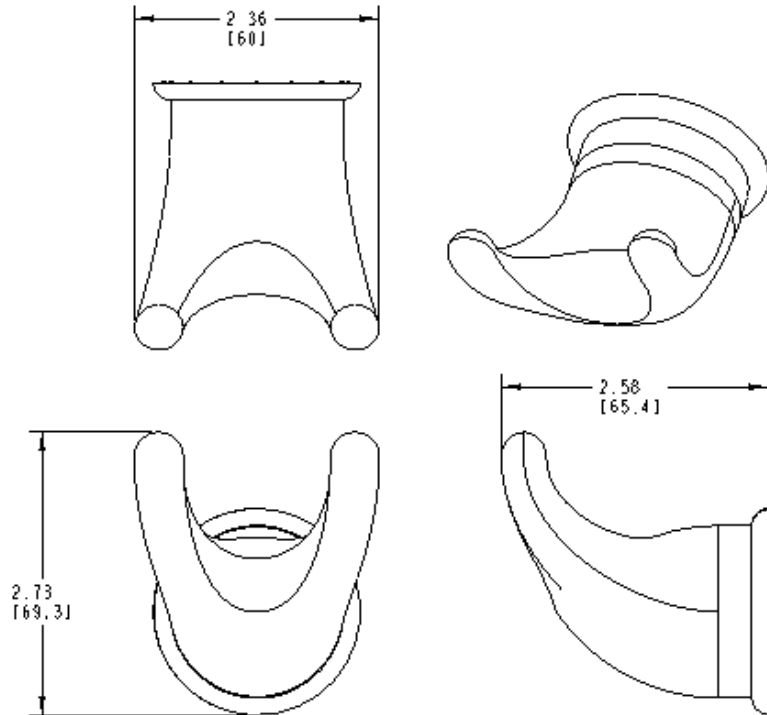
Robe Hook

YB8003

Stock Numbers:

- ❑ YB8003CH – Robe Hook
Chrome Finish
- ❑ YB8003OWB – Robe Hook
Old World Bronze Finish
- ❑ YB8003PB – Robe Hook
Polished Brass Finish
- ❑ YB8003BC – Robe Hook
Brushed Chrome Finish
- ❑ YB8003SN – Robe Hook
Satin Nickel Finish

Dimensions:



Materials:

Robe Hook is constructed of zinc.

Installation Instructions:

1. Locate position where robe hook should be installed.
2. Using 1/4" drill bit, drill one pilot hole.
3. Position mounting post to wall by inserting wall anchor into pilot hole and pressing firmly.
4. Make sure that locking tab on mounting post is facing down (6 o'clock).
5. Tighten wall anchor screw while holding mounting post firmly in place.
6. Attach robe hook by pressing firmly to mounting post until it clicks. (The square opening at the base of the post must be facing down to match-up with locking tab.)
7. Place spring roller into each post.

Cleaning Instructions:

To preserve the fine finish of this product, clean only with a soft damp cloth. Dry well. Do not use commercial or abrasive cleaners.

Stock Number: _____ Robe Hook
By Creative Specialties



25300 AL MOEN DRIVE • NORTH OLMSTED, OH 44070
CORPORATE HEADQUARTERS: (800) 321-8809 • FAX: (800) 848-6636
INTERNATIONAL: (440) 962-2000 • FAX: (440) 962-2726
CUSTOMER SERVICE (USA): 800-882-0116 • FAX: (888) 379-2720
WWW.MOEN.COM

©Copyright Creative Specialties International

Literature #BA1227