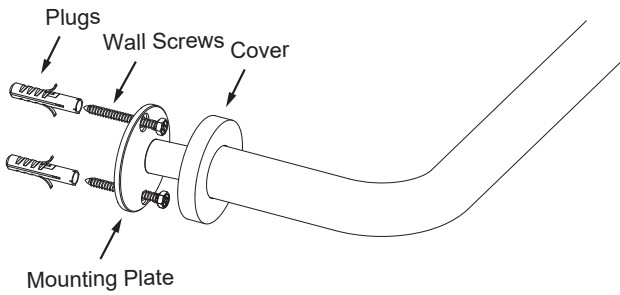
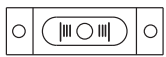


GRAB BARS SERIES PERSONAL GRAB BAR

8289301



Tools required for installation



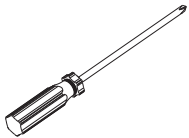
Level



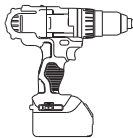
Pencil



Wrench



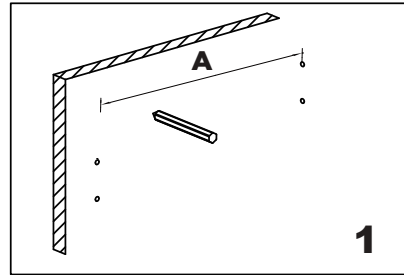
Screwdriver



Drill

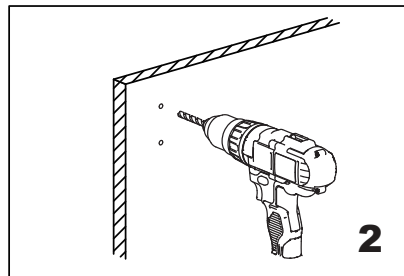


Hammer



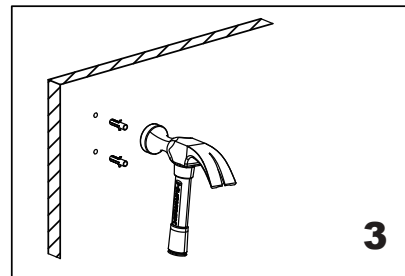
1

Mark (on the wall) locations of plugs through mounting plate using a pencil, refer to Fig.1



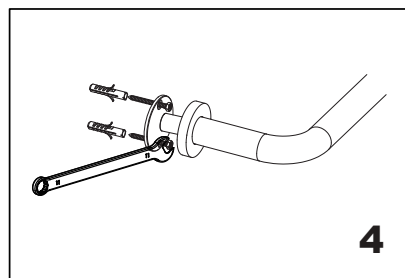
2

Drill 3/16" holes, make sure to keep drill level



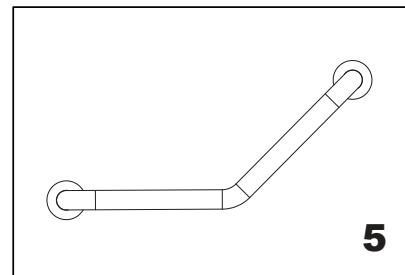
3

Insert plugs into drilled holes, using a hammer to tap the plugs in, be careful not to break tile



4

Driver bolt nut directly into holes



5

Tighten the cover on the Mounting plate