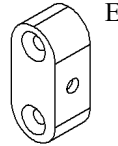
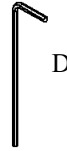
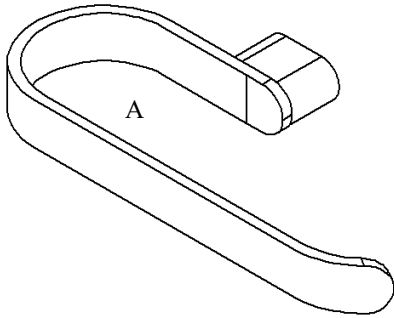




Exhilarating by Design

Volkano Flow Towel Bar Installation Guide

Code: V4313, V4314, V4315, V4310-BGL, V4310-BGD



Parts Included	QTY
A - Towel Bar	1
B - Screw	2
C - Set Screw	1
D - Allen Key	1
E - Bracket	1

Model #	Description	Finish	Weight (lb)	WxHxD (mm)	WxHxD (Inches)	Metal Type
V4313	Flow Towel Bar	Chrome	1	207 x 22 x 91	8 x 1 x 3.5	Brass
V4314	Flow Towel Bar	Brushed Nickel	1	207 x 22 x 91	8 x 1 x 3.5	Brass
V4315	Flow Towel Bar	Matte Black	1	207 x 22 x 91	8 x 1 x 3.5	Brass
V4310-BGL	Flow Towel Bar	Brushed Gold Light	1	207 x 22 x 91	8 x 1 x 3.5	Brass
V4310-BGD	Flow Towel Bar	Brushed Gold Light	1	207 x 22 x 91	8 x 1 x 3.5	Brass

Warranty: 2 Years

Care & Maintenance: A periodic wash using warm water and a soft cloth will retain the high quality finish of your Volkano product for many years to come. ON NO ACCOUNT should any household bleaches, detergents, abrasive polishes, steel wool or other cleaning agents be used on this item.

