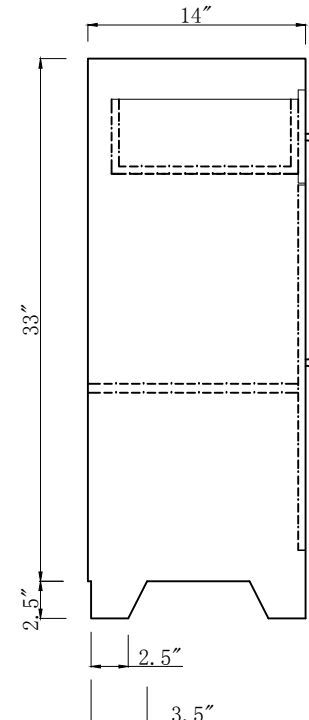
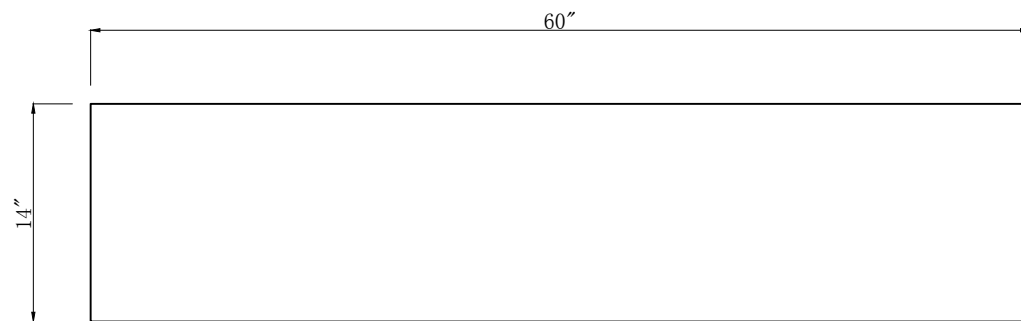


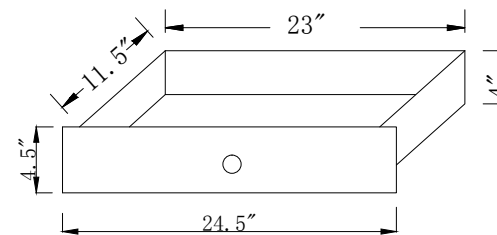
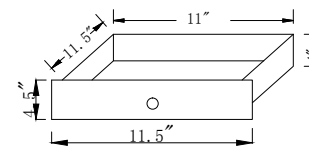
Front view




Side view



Top view



Drawer Interior Size

DWG. NO. :	
MODEL NO. : MF92058	
ALTERATIONS	
▲1	
▲2	
▲3	
▲4	
FOR PROPOSAL ONLY ALL DIMENSIONS TO BE VERIFIED	
SCALE:	
DWG. BY:	
CHECKED BY:	
DATE: July 11th, 2018	
PROJECT:	
Qty:	
Color:	
DRAWING TITLE:	
FINISH:	
	

Model #	MF92058	Doors included	NO	"table top maximum weight"	110LBS	saftey stop	YES	Drawer Interior Depth	Drawer1:11.5" Drawer2:11.5"
Finish	Clear	Number of Doors	4	Table: seating capacity	N/A	felt lined drawers	NO	cabinet interior width	11.5"/24.5"
Hand Painted	Yes	Finished Back	YES	upholstery color	N/A	drawer glide extension	N/A	cabinet interior depth	13"
Mirror type	Clear Mirror	Hardware finish	Chrome	upholstery pattern	N/A	drawer glide material	N/A	cabinet interior height	23"
Beveled glass	Yes	Assembly	NO	cushion material	N/A	drawer dividers	NO	leg height"	2.5"
Frame material	MDF	Product Length"	60"	base finish	Silver	Drawer Interior finish	Black	leg width"	3.5"
Solid wood construction	MDF	Product Width"	14"	powder coated finish	No	Ball Bearing Glides	YES	leg depth"	3.5"
Drawers Included	Yes	Product Height"	35.5"	base material	MDF	soft close drawer glides	YES	gloss finish	NO
Number of Drawers	3	Package LENGTH	65.6"	top material	Mirror	Number of cabinets	3	stackable	NO
Joinery Type	Butt Joint	Packaged WIDTH	19.5"	wood species	MDF	shelf height	shelf1:13" shelf2:10"	leg design	Trapezoid Legs
Drawer railing	Metal	Packaged HEIGHT	45.4"	tip over restraint strap	YES	shelf width	11.5"/24.5"	Armoires: ring slots	N/A
Drawer Width"	Drawer1:11.5" Drawer2:24.5"	Package Weight(lbs)	198LBS	shape of top	Rectangle	shelf depth	13"	Armoires: hooks	N/A
Drawer Depth"	Drawer1:12.5" Drawer2:12.5"	Product Weight(lbs)	165LBS	lift top	NO	Shelf thickness	0.5"	armoires: mirror dimensions	N/A
Drawer Height"	Drawer1:4.5" Drawer2:4.5"	Shipping Type	LTL	shelf material	MDF	Any certification?	CARB	door thickness	1"
Drawer Model	MF91058-DW1/MF91058-DW2	"table top width"	14"	adjustable shelves	NO	California Proposition 65 warning required	YES	false drawers?	NO
Shelves	NO	table top finish	Clear mirror	Drawer Handle designs	Knobs	Drawers Interior Height	Drawer1:4" Drawer2:4"	sink type	N/A
Number of Shelves	3	glass top tempered	NO	Door Knob Model	KB901	Drawer Interior Width	Drawer1:11" Drawer2:23"	# of faucet holes	N/A

DWG.NO.

MODEL NO:MF92058

SPEC NO:

QUANTITY:

DATE:July11th,2018

CHECKED BY:

FOR PROPOSAL ONLY ALL DIMENSIONS TO BE VERIDIED

PROJECT:

COULR:

FINISH:

REVISIONS



ELEGANT
FURNITURE & LIGHTING

500-550E. Erie Avenue Philadelphia PA 19134 1-888-388-3390